

Combinant nv



The Intermodal “open access” terminal in the port of Antwerp.

Table of content



Shareholding



Location



Key figures

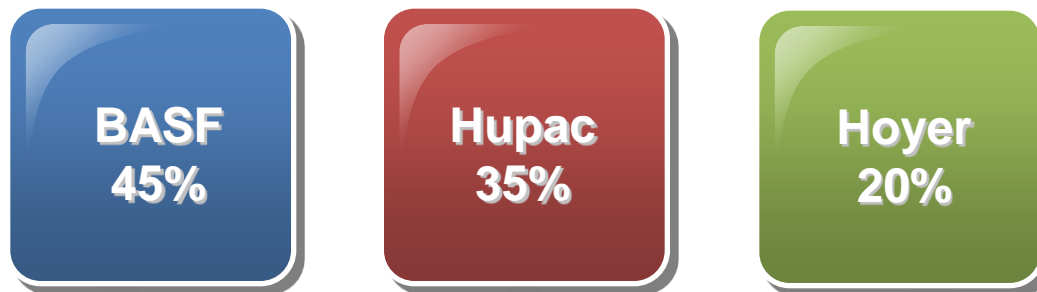


Market outlook



Strenghts

Joint venture



BASF
45%

Hupac
35%

Hoyer
20%

Combinant

**Total investment for building the terminal
Exploitation of the terminal**

Partners



BASF

Largest Chemical production site in Belgium.

Total cargo flow 15,6 million ton.

- 57% ship
- 8,5% road
- 3,5% intermodal
- 28% pipelines
- 3% rail

BASF Antwerpen wants to reduce the proportion of road transportation in favour of rail transportation to achieve a sustainable 'supply chain

Hupac

- 100 trains per day
- 661.540 road consignments
- 5.216 rail platforms
- 10 owned terminals
- 413 employees

Hupac wants to support extra terminal capacity for future growth.

Hoyer

- **Operations of container terminals, dangerous goods terminals, container depots, cleaning stations as well as maintenance and repair shops**
- **More than 90.000 intermodal bulk liquid transports in Europe per year**
- **Represented in over 80 countries worldwide by own subsidiaries and agents**
- **28.000 tank containers and 3.000 road tankers in operation**
- **5.000 employees**

HOYER wants to expand the terminal infrastructure in order to build up a pan-European intermodal network

Location



Combinant

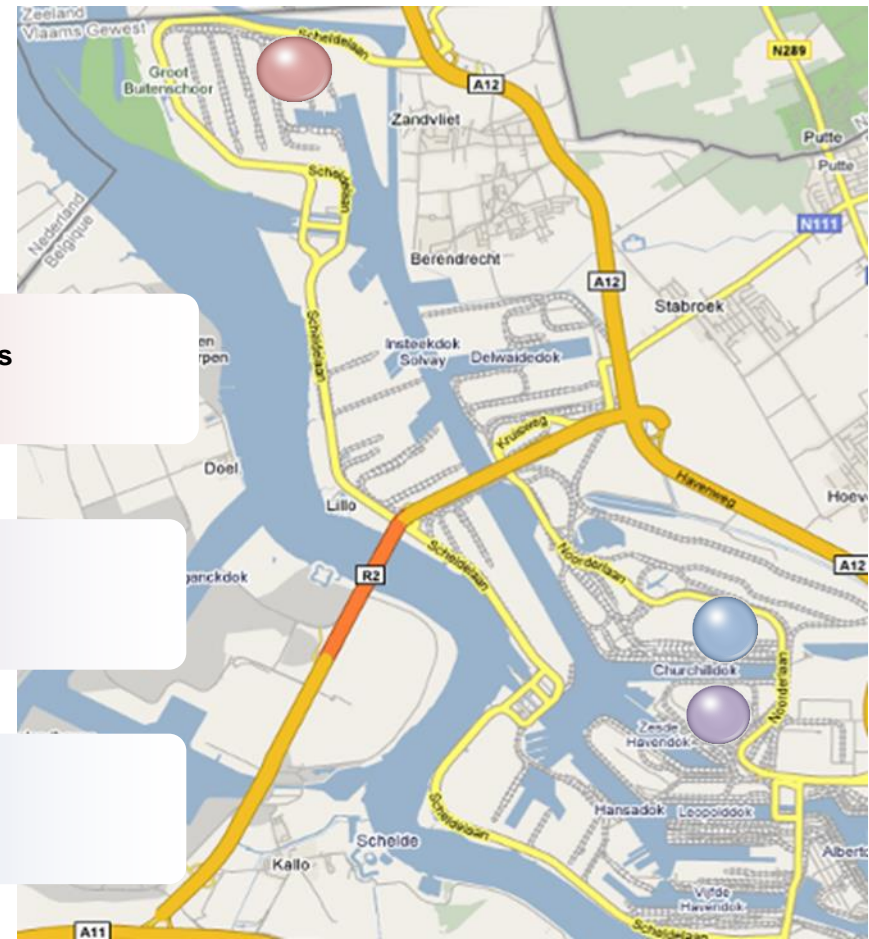
- Northern area of the harbour
- Quick access to the motorways
- Open Access

IFB

- Zomerweg

Hupac

- Muisbroek Q468



Location



Key figures



Total Investment
28,6m
EFRO : 4,3m
Flemish
government : 4,5m



5 rail tracks 620m
7 shunting tracks
BASF
Shunting
Locomotive BASF
3 RMG's
1 reachstacker
900 TEU storage
Parking 70 trailer
VAL zone 15000 m2

- **106 trains per week**
- **130.000 units on yearly base**
- **400 trucks per day**

Key figures



Plein - COMBINANT

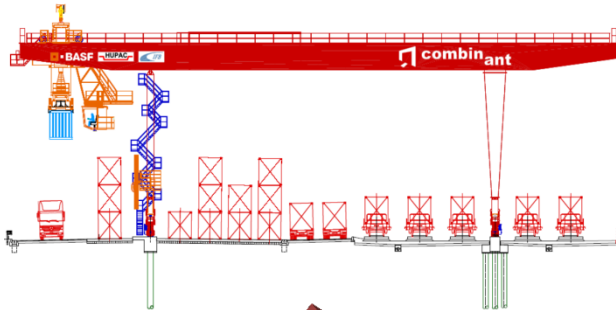
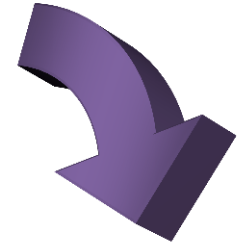
Bestand Bewerken Beeld Record Help Venster

Pleinbeheer

Selectie Datum: 04/05/2012 Filter Herladen Activeren scenario
 Dagen: 1 Operator aanwezig Scenario: Nieuw loadplan/voiplan

Laden	Lossen	Entia Services
41515 04/05	41557 04/05	42517 04/05
43553 04/05	43573 02/05	43579 04/05
43851 04/05	10 F-CEM-VER 31/12	
13 F-HUP-BAR 31/12	26 F-HUP-LUDWIG 31/12	35 F-HUP-POLEN 31/12
57 F-KOM-DUI 31/12		
27 F-NAV-DOURGES 31/12	159 F-NOVARA/BASEL 31/12	65 F_CFL_BET 31/12
10 PLEIN 19/05	1 POOL	

COMBINANT

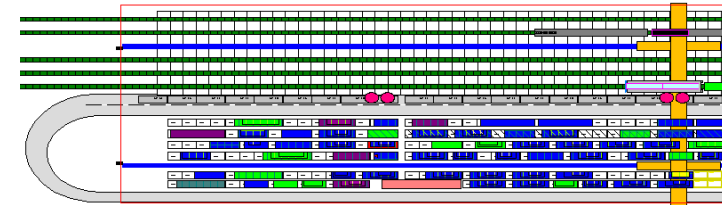


• Detailed Pictures from Truck and rail

• overview of terminal

• Real time IT system with EDI

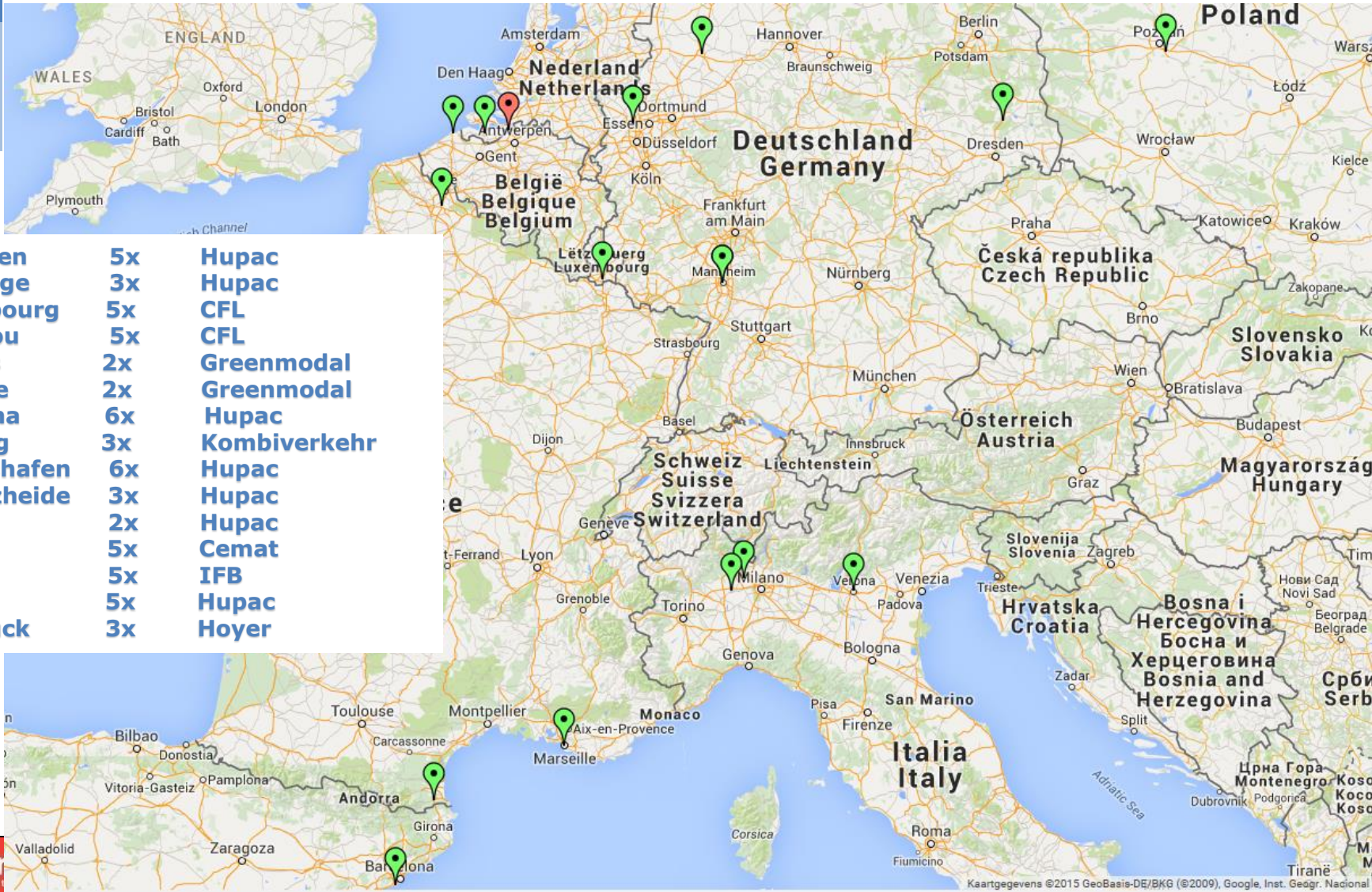
• Real time Graphical Lay out of the terminal



Train program



Train program Combinant



Expectations of TAG group

- Use of “real” terminals in the advisory group
- Try to work as much as possible together with existing RFC's
- Terminals are willing to work together.
- Need to go towards European Network.

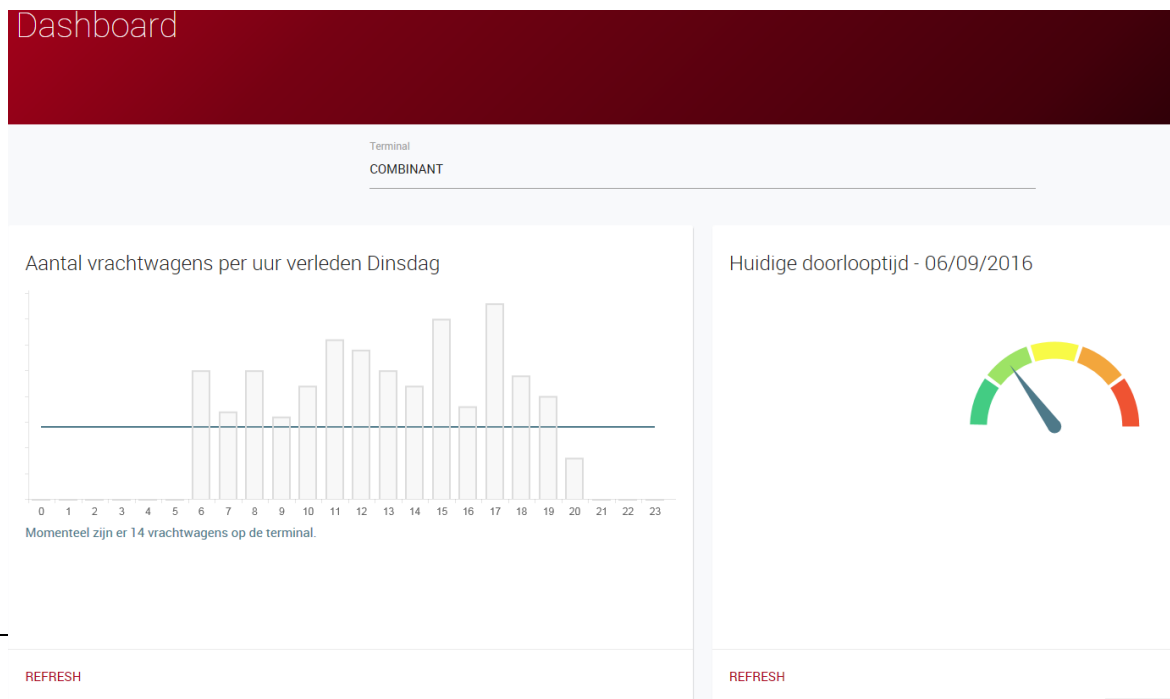
Bottleneck Terminals



❖ Peak moments trucks

- Creation Fastgate infrastructure
 - Creation web application
 - Not only input from Trucking company
- <http://cetis.combinant.be/fastgate/login>

Dashboard



Thank You !



www.combinant.be